

certificate ID
2KD66

Uncle Bucks
Bucks Vape Cart

HB701 Certificate of Compliance



C-100279-001

issue date 10/8/22 2:49 PM

This Product Has Been
Tested and Meets the
Quality Assurance
Requirements of the
State of Montana

Stillwater
Laboratories

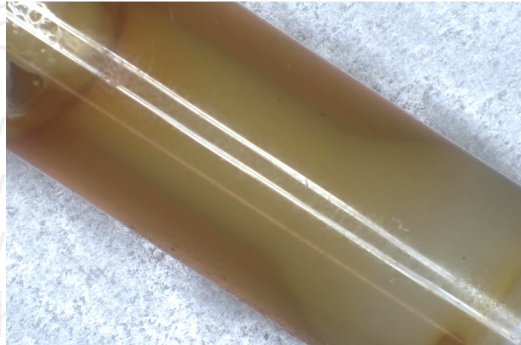
15275
order

Incoming Inspection MSP-7.5.1.2

Potency MSP-7.5.1.4

LOD LOQ error

DESCRIPTION: Vape cartridge sample (1.00g) received 10/5/2022 2:45:45 PM in a marked 50mL Falcon tube, collected at dispensary/grow. 1 and sample tag B2NGJ.



SECURITY FEATURE: WATERMARK MUST MATCH CERTIFICATE ID AND ISSUE DATE

Pass / Fail Criteria

Microbial MSP-7.5.1.10b
not required / not requested

Pesticides MSP-7.5.1.8
not required / not requested

Solvents MSP-7.5.1.7
not required / not requested

Mycotoxins MSP-7.5.1.8
not required / not requested

Moisture MSP-7.5.1.3
not required / not requested

Metals MSP-7.5.1.7
FAIL: no failures
PASS: Arsenic, Cadmium, Lead, Mercury

Certified by:



https://customer.a2la.org/index.cfm?event=directory_detail&labPID=423635B2-5128-4C6F-871A-419DCF43B0D7

Stillwater Laboratories Inc.
MT License L100060-002
6073 US93N Suite 5, Olney MT 59927
Ph 406-881-2019. www.stwllabs.com

These results are only valid for the samples tested. • Potency (cannabinoid concentration) is calculated as: $[\text{cannabinoid}] = [\text{cannabinoid}]_{\text{HPLC}} \times \text{volume}_{\text{dilution}} / m_{\text{dry}}$. •• Decarboxyted cannabinoid concentration is calculated $\text{XXX}_{\text{total}} = 0.877 \times \text{XXX}_a + \text{XXX}_{\text{c}}$ •• Standards are used to calibrate the resulting data and estimate error using a standard estimate of error method; LOD is the limit of detection (3.3s), LOQ is the limit of quantification (3xLOD), and experimental error is calculated from weighing, dilution, and interpolation error using the formula $s_g^2 = \sum (\partial f / \partial i)^2 s_i^2$ where i is the contributor to error. The 95% confidence range is calculated from: (concentration) $\pm t_{\text{CL90}} \times s_g$. Sampling error is not considered in error calculations. ND = not detected (< LOD), NT = not tested, NL = no limit, NA = not applicable. ‡ = decarbed, * = analyte is off-scope.

certificate ID
2KD66

Uncle Bucks
Bucks Vape Cart

ANALYTICAL DATA

Stillwater
Laboratories



Report Version: 1
Analysis Location: L-100060-

15275
order

order 15275
rec'd date 10/5/2022 2:45:45 PM
issue date 10/8/2022 2:49:05 PM

Methods and Instruments

MSP-7.3.1.1	BAL-05	10/5/2022	MSP-7.5.1.7	QP2020/HS20	10/6/2022
MSP-7.5.1.2	YSC HD801m12	10/6/2022	MSP-7.5.1.8	LCMS8060	10/6/2022
MSP-7.5.1.3	6MOC63u	10/6/2022	MSP-7.5.1.8	LCMS8060	10/6/2022
MSP-7.5.1.4	LC-2030C	10/6/2022	MSP-7.5.1.10b	Hardy Diag	10/6/2022
MSP-7.5.1.6	QP2020/HS20	10/6/2022	MSP-7.5.1.11	ICPMS2030	10/6/2022

L-100060-002

SECURITY FEATURE: WATERMARK MUST MATCH CERTIFICATE ID AND ISSUE DATE

Metals

	MSP-7.5.1.7	limit	LOD	LOQ	error	result
Arsenic	ND	10000 ppb	8.0	24.0	±24.0 ppb	PASS
Cadmium	ND	4100 ppb	8.6	25.8	±25.8 ppb	PASS
Lead	ND	6000 ppb	13.4	40.2	±40.2 ppb	PASS
Mercury	ND	2000 ppb	6.7	20.2	±20.2 ppb	PASS

These results are only valid for the samples tested. • Standards are used to calibrate the resulting data and estimate error using a standard estimate of error method; LOD is the limit of detection (3.3s), LOQ is the limit of quantification (3xLOD), and experimental error is calculated from weighing, dilution, and interpolation error using the formula $s_g^2 = \sum (\partial f / \partial i)^2 s_i^2$ where i is the contributor to error. The 95% confidence range is calculated from: (concentration) ± $t_{CL90} \times s_g$. Sampling error is not considered in error calculations. ND = not detected (< LOD), NT = not tested, NL = no limit, NA = not applicable.

Certified by:



Stillwater Laboratories Inc.
MT License L0001, L00007, L00010
6073 US93N Suite 5, Olney MT 59927
1408 Unit 4 Gold Ave, Bozeman MT 59715
Ph 406-881-2019. www.stwlab.com